



**Corporate Representative's  
Report  
IFCC Council Meeting  
April 10, 2022**

**Joe Passarelli – Executive Board  
Corporate Representative  
Contact:  
[joseph.passarelli@roche.com](mailto:joseph.passarelli@roche.com)**

**Advancing excellence in laboratory medicine for better healthcare worldwide**

This is not an authorized Roche presentation





# Corporate Representatives in Executive Committees

The following corporate representatives are members of the Executive Committees of IFCC's operational units:

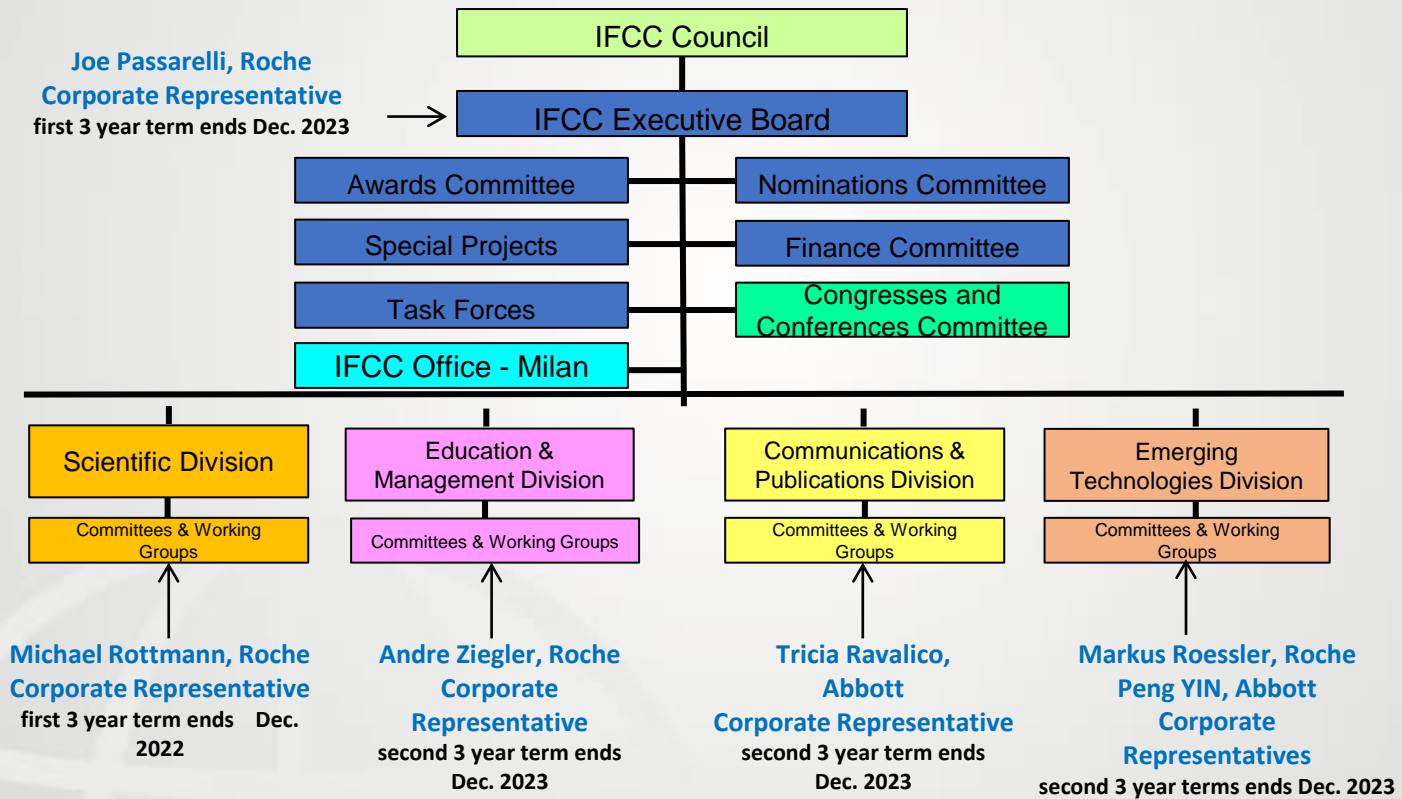
- **Scientific Division:**  
Michael Rottmann (Roche) (1<sup>st</sup> term Mar 2020-2022)
  
- **Emerging Technologies Division:**  
Peng Yin (Abbott) (2<sup>nd</sup> term 2021-2023)  
Markus Roessler (Roche) (2<sup>nd</sup> term 2021-2023)
  
- **Education & Management Division:**  
André Ziegler (Roche) (2<sup>nd</sup> term 2021-2023)
  
- **Communications & Publications Division:**  
Tricia Ravalico (Abbott) (2<sup>nd</sup> term 2021-2023)
  
- **Congresses & Conferences Committee:**  
Cheryl Jackson (Beckmann Coulter) (2<sup>nd</sup> term 2021-2023)

...and many more in

- **Committees**
- **Working Groups**
- **Task Forces**



# IFCC Structure and Organization





# Who are the current IFCC Corporate Members? (Status March 2022) *{\*New in 2019-2022}*

4

**53 in total**

Abbott (USA)  
Agappe Diagnostics Ltd (India)  
Asahi Kasei Pharma Corporation (Japan)  
Autobio Diagnostics (China)\*  
BD Life Sciences (UK)  
Beckman Coulter (USA)  
The Binding Site Group (UK)  
Bio-Rad Laboratories (France)  
C.P.M. Diagnostic Research SAS (Italy)  
Diagnostica Stago (France)\*  
DiaSorin (Italy)\*  
Diasys (Germany)  
ET Healthcare (USA)  
Fujifilm Wako Pure Chemical Corp. (Japan)  
Fujirebio Europe (Belgium)  
Gentian AS (Norway)  
Helena Biosciences Europe (UK)  
Hemas Hospitals (Sri Lanka)  
HyTest Ltd. (Finland)  
Immunodiagnostic Systems (IDS) (UK)\*  
Instrumentation Laboratory (IL), (USA)\*  
JSC Megalab (Georgia)\*  
LLP Labtronic (Kazakhstan)\*  
LumiraDx (UK)\*  
Maccura (China)  
MedicalSystem Biotechnology (China)  
Medix Biochemica (Finland)\*  
Menarini Diagnostics (Italy)  
Mindray Bio-Medical Electronics (China)  
Nittobo Medical (Japan)\*  
Nova Biomedical Corporation (USA)  
Oneworld Accuracy Collaboration (Canada)  
Ortho-Clinical Diagnostics (UK)  
PHC Europe B.V. (ex Mitsubishi) (Germany)  
PerkinElmer (Finland)\*  
Radiometer Medical (Denmark)  
Randox Laboratories (UK)  
Roche Diagnostics (Switzerland)  
Sebia (France)  
Sekisui Diagnostics (UK)  
Sentinel CH (Italy)  
Shanghai Kehua Bio-Engineering (China)  
Shanghai Zhicheng Biological Technology (China)  
Shenzen YHLO Biotech (China)\*  
Siemens Healthcare Diagnostics (USA)  
Snibe (China)  
Synlab International (Germany)\*  
Sysmex Europe (Germany)  
Technogenetics (Italy)\*  
Thermo Fisher Scientific (Finland)  
Tosoh (Japan)\*  
Labor Dr. Wisplinghoff (Germany)  
Wuhan Life Original Biotech Joint Stock (China)\*



# IFCC Corporate Members

AGAPPE

**Abbott**  
A Promise for Life

FUJIREBIO

maccura

Roche

acutecaretesting.org  
RADIOMETER

Autobio  
安图生物

AsahiKASEI  
Creating for Tomorrow

Medix Biochemica

RANDOX

Snibe  
Diagnostic

BIO-RAD

BD  
Helping all people live healthy lives

Nittobo Medical

mindray

sebia

SYNLAB

BECKMAN COULTER  
We're better together

HEXMAS HOSPITAL

A.MENARINI diagnostics

SEKISUI DIAGNOSTICS

sysmex

helenahelena  
Biosciences Europe

Ortho-Clinical Diagnostics  
a Johnson-Johnson company

NOVA biomedical

SENTINEL DIAGNOSTICS

TECHNO GENETICS  
KHB GROUP

Stago  
Diagnostics is in our blood.

HyTest

ids  
Immunodiagnostic systems

oneworldACCURACY COLLABORATION

ZhiCheng  
www.shzhicheng.com

ThermoFisher SCIENTIFIC

Instrumentation Laboratory  
A Werfen Company

MEGALAB

gentian

ding Site  
THE BINDING SITE

TOSOH

DiaSys  
Diagnostic Systems

ET Healthcare

Labtronic

PerkinElmer  
For the Better

DiaSorin  
The Diagnostic Specialist

Wako

lumiraDx™

PHC Europe B.V.

YHLO

SIEMENS Healthineers

laboratoriumsmedizin köln  
DRES. MED. WISPLINGHOFF UND KOLLEGEN

Szybio  
LIFE ORIGIN BIOTECH



## Where are most of the Corporate Members based?

**China (9)**

**UK (8)**

**USA (6)**

**Germany and Italy (5)**

**Japan and Finland (4)**

**France (3)**



# IFCC Corporate Membership changes since 2014

7

## New Corporate Members (28)

- Helena Biosciences Europe – 2015
- Ningbo Medicalsystem Biotechnology – 2015
- KHB Shanghai Kehua Bioengineering – 2016
- Beijing Dream Diagnostic Medicine (BDDC) – 2017
- Timedico – 2018
- Hemas Hospitals Ltd. – 2018
- ET Healthcare – 2019
- Nittobo Medical – 2019
- SCL Healthcare – 2019
- Immunodiagnostic Systems (IDS) – 2019
- Agilent – 2019
- Zhejiang Kuake Biotechnology – 2019
- LLP Labtronic – 2019
- Tosoh – 2020
- Wuhan Life Original Biotech Joint Stock – 2020
- Megalab – 2020
- LumiraDx – 2020
- Shenzhen YHLO Biotech – 2020
- Instrumentation Laboratory – 2020
- Technogenetics – 2021
- PerkinElmer – 2021
- Panasonic Healthcare EU (PHC-EU) (formerly Mitsubishi Chemical Europe GmbH) - Replaces Mitsubishi – 2021
- GenScript Biotech Corporation – 2021
- Autobio Diagnostics – 2021
- Medix Biochemica - 2021
- Diagnostica Stago – 2021
- Synlab International – 2022
- DiaSorin - 2022

## Cancellations (28 + 2)

- Biomerieux – 2014
- Perin Elmer – 2014
- Innotracc Diagnostic – 2014
- Immunodiagnostic Systems – 2014
- BG Medicine – 2014
- Dako – 2015
- Wiener – 2015
- Drew Scientific – 2015
- Labquality – 2015
- Care – 2015
- Scipac – 2015
- Phadia – 2015
- Biocrates – 2016
- Merck Millipore – 2016
- Elga Labwater – 2017
- Response Biomedical – 2017
- Sonic Healthcare Europe – 2017
- Philips – 2017
- Unilabs – 2017
- Axis Shield – 2018
- Guangzhou Wondfo Biotech – 2018
- Instrumentation Laboratory – 2018
- Analis – 2019
- SCL Healthcare – 2020
- PPD – 2020
- Zhejiang Kuake Biotechnology – 2020
- Timedico – 2020
- + 2 cancellations due to mergers
- GenScript Biotech Corporation - 2022

**Stronger engagement & retention  
of Corporate Members is needed**



**Task Force Corporate Members (TF-CM) was initiated in 2019 to enhance collaboration and improve retention**







## Task Force Corporate Members (TF - CM)

### Full members

Tricia Ravalico (Chair)	(Abbott, USA)
Alessandro Ortisi (Secretary)	(Siemens Healthineers, Italy)
Jean-Sébastien Blanchet (Member)	(Beckman Coulter, France)
Vincent Chen (Member)	(Snibe, China)
Brendan Meyer (Member)	(Becton Dickinson, UK)
Andy Quintenz (Member)	(Bio-Rad Laboratories, USA)

Joe Passarelli (Corp. Rep. at Executive Board) (Roche, USA)

### Corresponding members

Jan Gorka	Diasys
Maurizio Gramegna	Technogenetics
Gavin Tu	Maccura Biotechnology
Anne Skurup	Radiometer Medical ApS
Yan Liu	Mindray
Ivan Salgo	Ortho Clinical Diagnostics

**Corporate Representatives of the Divisions are invited as guests**

Other interested persons can apply (one per company that has no full member)



# Mission of the Task Force Corporate Members

10

## Objectives:

- To assist IFCC in promotion of science, innovation, and advancement of the essential contribution of laboratory medicine to health care
- To facilitate discussion among Corporate Members and identify common topics of interest and/or concern
- To improve the engagement of Corporate Members with the IFCC
- To serve as the “voice of industry” and be more accessible to all IFCC teams and leadership, enabling a more diverse understanding and appreciation of needs among corporate members and the IFCC
- To increase awareness with other Corporate Members of IFCC TF-CM and to encourage their participation in IFCC activities

## Areas of Focus:

- The voice of corporate members within IFCC
- High impact and frequency of conferences/congresses
- Growth and sustainability of corporate members
- Effective, timely and enhanced communications among IFCC, Conference Organizing Secretariat, and Corporate Members
- Industry needs for IFCC involvement with regulators and clinical societies





## TF-CM Survey Qualitative Questions:

12

1. What can IFCC do to enhance membership benefits to corporate members?
2. Has the overall value of being a corporate member of the IFCC increased, decreased, or stayed the same over the past year. If increased or decreased, please elaborate.
3. Has your company's overall participation in IFCC committees, working groups, task forces, etc. increased, decreased, or stayed the same over the past year. If increased or decreased, please elaborate.
4. Are relevant members of your organization regularly aware of opportunities to partner with the IFCC? Yes, No, not to the extent desired?
5. Has your company's interest and/or engagement with the IFCC increased, decreased, or stayed the same over the past year. If increased or decreased, please elaborate.
6. Do you believe the IFCC has increased, decreased, or stayed the same with respect to partnering with corporate members to influence laboratory medicine. If increased or decreased, please elaborate.
7. Please add any additional comments that have not already been addressed by the survey, especially any areas that can be improved.



## How can IFCC become more attractive for Corporate Members?

13

- By **increasing awareness for the importance of lab testing** in general and providing education with focus on countries with limited resources.
- By **supporting**, together with clinical societies, **medical claims leading to reimbursement**.
- By emphasizing the **importance of quality and of standardization / harmonization** of testing, clinical pathways, reporting, result interpretation...
- By **co-operating** with other organizations (CLSI, ISO, FDA, regional federations, clinical societies, etc.) to secure **alignment of guidelines and recommendations** and **harmonization of global regulatory requirements**.
- By becoming more active in **IVDR** and its **implementation**.
- By providing **opportunities for exhibitions, industry symposia and networking** with lab professionals at high-level academic conferences, **especially with hybrid or virtual formats**.
- By increasing **participation** of Corporate Members at all levels.



## Upcoming conferences and Corporate Members of the Congress Organizing Committee

The following persons are Corporate Members of the Congress Organizing Committees (COC):

- **IFCC-EFLM EuroMedLab 2022, April 10 - 14**  
**Munich, Germany:**  
Abir Alhelou (Abbott)
- **IFCC WorldLab 2022, June 26 - 30**  
**Seoul, South Korea:**  
Douglas Chung (Abbott)
- **IFCC-EFLM WorldLab + EuroMedLab 2023, May 21 - 25**  
**Rome, Italy:**  
Angel de la Fuente (Roche)





## Next Corporate Members Meeting:

15

**When:** EuroMedLab Munich (in-person and with a virtual option)  
Monday, April 11, 2022  
11:30 – 13:30 local time





# IFCC Corporate Members

AGAPPE

**Abbott**  
A Promise for Life

FUJIREBIO

maccura

Roche

acutecaretesting.org  
RADIOMETER

Autobio  
安图生物

AsahiKASEI  
Creating for Tomorrow

Medix Biochemica

RANDOX

Snibe  
Diagnostic

BIO-RAD

BD  
Helping all people live healthy lives

Nittobo Medical

mindray

sebia

SYNLAB

BECKMAN COULTER  
We're better together

HEXMAS HOSPITAL

A.MENARINI diagnostics

SEKISUI DIAGNOSTICS

sysmex

PM SCIENTIFICA  
TECNOLOGIE BIOMEDICHE

helena  
Biosciences Europe

Ortho-Clinical Diagnostics  
a Johnson-Johnson company

NOVA biomedical

SENTINEL DIAGNOSTICS

TECHNO GENETICS  
KHB GROUP

Stago  
Diagnostics is in our blood.

HyTest

ids  
Immunodiagnostic systems

oneworld ACCURACY COLLABORATION

ZhiCheng  
www.zhicheng.com

ThermoFisher SCIENTIFIC

Instrumentation Laboratory  
A Werfen Company

MEGALAB

gentian  
Improving Clinical Accuracy

Binding Site  
THE BINDING SITE

TOSOH

DiaSys  
Diagnostic Systems

ET Healthcare

Labtronic

PerkinElmer  
For the Better

DiaSorin  
The Diagnostic Specialist

YHLO

laboratoriumsmedizin köln  
DRES. MED. WISPLINGHOFF UND KOLLEGEN

Wako

lumiraDx™

PHC Europe B.V.

SIEMENS Healthineers

Szybio  
LIFE ORIGIN BIOTECH





# Thank you for your participation

For further information visit  
[www.ifcc.org](http://www.ifcc.org) | [eacademy.ifcc.org](http://eacademy.ifcc.org)

 **eAcademy**



**IFCC**  
International Federation  
of Clinical Chemistry  
and Laboratory Medicine