

# INTRODUCTION

# INFORMATION

# FLOW CYTOMETRY



## Flow Cytometry

has now firmly established itself as a diagnostic method in many areas of modern medicine.

The International Federation of Clinical Chemistry and Laboratory Medicine (IFCC) intends to intensify its educational activities in the field of modern laboratory technologies. In accordance with this strategy an IFCC Steering Committee "Flow Cytometry Course" with the support of Beckman Coulter, organizes a "European Course on Clinical Applications of Flow Cytometry".

The 2012 event will focus on Clinical immunology and Stem cell research. Recent developments in sorting, analysis and clinical applications will be addressed by international experts. Lectures as well as hands-on sessions will take place from February 23-25 in Leipzig/Germany.

The course is open to a maximum of 36 scientists which are using flow cytometry as a diagnostic or research tool within a clinical setting.

Practical and theoretical knowledge of flow cytometry is recommended for participation in this course.

### Conference Secretariat

Ariane Kölsch, Marketing  
Beckman Coulter GmbH  
Europark Fichtenhain B13, 47807 Krefeld, Germany  
Tel. +49 (0) 2151 333-723  
Fax +49 (0) 2151 333-707  
E-mail: akoelsch@beckman.com

### Scientific Information

Prof. Dr. Ulrich Sack  
E-mail: sack@uni-leipzig.de  
Fax: +49 (0) 341 9739367

### Venue

BIO CITY Leipzig  
Deutscher Platz 5 a  
04103 Leipzig



### Course Webpage

[www.ifcc.org](http://www.ifcc.org)  
[www.escca.eu](http://www.escca.eu)



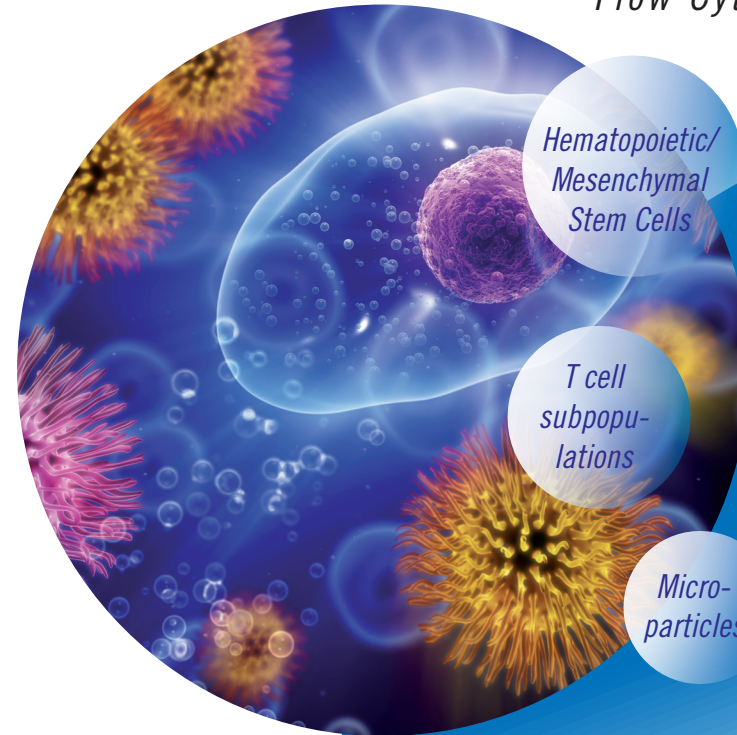
Beckman Coulter GmbH  
Europark Fichtenhain B13, 47807 Krefeld  
Telephone +49 (0) 2151 333-5, Fax +49 (0) 2151 333-631  
[www.beckmancoulter.de](http://www.beckmancoulter.de)



Visit us on Facebook  
[www.facebook.com/BeckmanCoulterGmbH](http://www.facebook.com/BeckmanCoulterGmbH)

## Invitation

# IFCC/ESCCA Beckman Coulter Flow Cytometry Course



Hematopoietic/  
Mesenchymal  
Stem Cells

T cell  
subpopu-  
lations

Micro-  
particles

Baso-  
philes

Sorting

Flow  
cytometry  
in  
immunology  
and  
stem cell  
research

February 23-25, 2012  
Leipzig, Germany

Bio City Leipzig

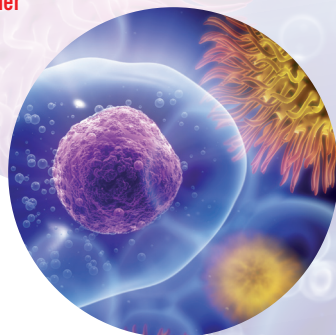




**Bio City Leipzig**  
Leipzig - Germany

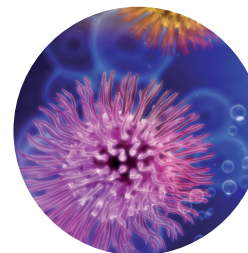
**Thursday, 23 February 2012**

- 09:00 hrs **Introduction**  
*Ulrich Sack (Leipzig, DE)*
- 09:15 hrs **Sorting HSC**  
*Vasilis Toxavidis/John Tiggis (Boston, USA)*
- 10:00 hrs **Microparticles**  
*Marion Macey (London, UK)*
- 10:45 - 11:15 hrs **Coffee Break**
- 11:15 hrs **Immunodeficiencies**  
*Ilka Bondzio (Freiburg, DE)*
- 12:00 - 13:00 hrs **Lunch Break**
- 13:00 -18:30 hrs **3 Practical Sessions (á 100 minutes)**
- **Sorting HSC (remote access)**  
*Vasilis Toxavidis/John Tiggis (Boston, USA)*
  - **Microparticles (demonstration, based on list mode files)**  
*Marion Macey (London, UK)*
  - **Innate immunodeficiencies (practical work, Navios cytometer provided by Beckman Coulter)**  
*Ilka Bondzio (Freiburg, DE)*
- 20:00 hrs **Dinner at Auerbachs Keller**



**Friday, 24 February 2012**

- 09:00 hrs **Sorting MSC**  
*Vasilis Toxavidis/John Tiggis (Boston, USA)*
- 09:45 hrs **Residual T cells**  
*Ulrike Köhl (Frankfurt, DE)*
- 10:30 - 11:00 hrs **Coffee Break**
- 11:00 hrs **NK cells**  
*Harry Dolstra (Nijmegen, NL)*
- 11:45 - 13:00 hrs **Lunch Break**
- 13:00 - 18:30 hrs **3 Practical Sessions (á 100 minutes)**
- **Sorting MSC (remote access)**  
*Vasilis Toxavidis/John Tiggis (Boston, USA)*
  - **Residual T cells (demonstration, based on list mode files)**  
*Ulrike Köhl (Frankfurt, DE)*
  - **NK cells (practical work, Navios cytometer provided by Beckman Coulter)**  
*Harry Dolstra (Nijmegen, NL)*
- 20:00 hrs **Dinner at Gosenschenke "Ohne Bedenken"**



**Saturday, 25 February 2012**

- 09:00 hrs **Customized cellular products**  
*Matthias Schiemann (München, DE)*
- 09:45 hrs **Basophiles**  
*Claude Lambert (St. Etienne, FR)*
- 10:30 - 11:00 hrs **Coffee Break**
- 11:00 - 14:00 hrs **Lymphocyte subpopulations**  
*Johannes Fischer (Düsseldorf, DE)*
- 11:45 - 13:00 hrs **Lunch Break**
- 13:00 - 18:30 hrs **3 Practical Sessions (á 100 minutes)**
- **Customized cellular products (demonstration, based on list mode files)**  
*Matthias Schiemann (München, DE)*
  - **Basophiles (demonstration, based on list mode files)**  
*Claude Lambert (St. Etienne, FR)*
  - **Lymphocyte subpopulations (practical work, Navios cytometer provided by Beckman Coulter)**  
*Johannes Fischer (Düsseldorf, DE)*

**Registration**

WEB [www.beckmancoulter.de](http://www.beckmancoulter.de)  
E-Mail [akoelsch@beckman.com](mailto:akoelsch@beckman.com)  
FAX +49 (0) 2151 333-707  
Attn: Ariane Kölsch  
Marketing, Beckman Coulter

Mrs  Mr

First Name \_\_\_\_\_

Surname \_\_\_\_\_

Title \_\_\_\_\_

Institute \_\_\_\_\_

Street \_\_\_\_\_

Postal code \_\_\_\_\_

Country \_\_\_\_\_

Telephon \_\_\_\_\_

Fax \_\_\_\_\_

E-Mail \_\_\_\_\_

**Registration**

- I would like to attend the course.
- Please book one single room  
from \_\_\_\_\_ to \_\_\_\_\_  
at Hotel Novotel Leipzig City for 99 Euro  
per room and night incl. breakfast.

The course is limited to 36 participants.  
The registration fee is € 550,-.  
Each participant will receive an invoice after registration.  
Hotel accomodation and the travel expenses  
will be paid by the participants themselves.

Date

Signature